

# The New York Times

WHAT YOU GET

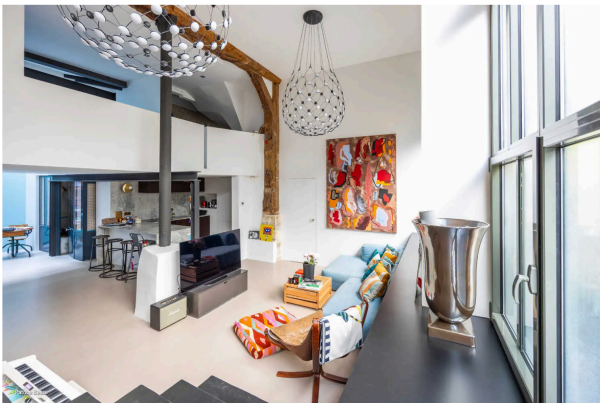
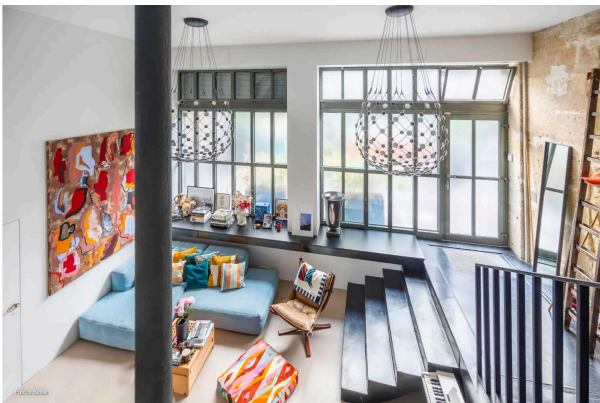
## \$1.5 Million Homes in Paris

An industrial loft in La Villette, a former workshop in Sainte-Avoye and an updated apartment with 19th-century touches on Île Saint-Louis.

 Share full article    196

By Alison Gregor

Published March 15, 2024 Updated March 17, 2024



### Sainte-Avoye | €1.39 million (\$1.5 million)

**A former workshop and gallery space with two bedrooms and two bathrooms, on a peaceful street in the Marais**

This loft apartment is in the colorful Sainte-Avoye neighborhood, a hub for artists and art dealers in the Marais district. Attractions include the half-acre Jardin d'Anne Frank and various museums, including the Museum of the Art and History of Judaism. The quirky Passage de L'Ancre is a hidden pedestrian thoroughfare.

The Marais had deteriorated but was revived in recent years, and now is among the more fashionable areas of Paris, with many buildings of historic and architectural significance. The district has plenty of restaurants, shops, groceries, parking garages and other amenities.

Close metro stops include Rambuteau, Arts et Métiers and Étienne Marcel, with all the amenities of central Paris minutes away.

**Size:** 1,112 square feet

**Price per square foot:** €1,250 (\$1,368)

**Indoors:** This loft was once a workshop and then a gallery. Notable is an industrial-style floor-to-ceiling glass wall housing the main entrance door, which opens to a landing overlooking a sizable living space with 13-foot ceilings. A wall of exposed stone, old timber beams, metal I-beams and a column add to the space's slightly gritty feel.

A kitchen in a contemporary marble design opens to the main living area. All floors are polished concrete. Beyond the kitchen, a space topped with a slanted glass roof is used as a library and office. A workshop-style glass partition separates it from a bedroom adjacent to a bathroom.

From the entrance landing, concrete stairs ascend to a mezzanine floor with two open sides running the length of the apartment. The mezzanine floor has an open-sided bedroom with en suite bathroom and a walk-in wardrobe large enough to be converted to a third bedroom.

**Outdoor space:** The apartment, in a building with nine units, is on a calm, private street.

**Taxes:** €1,035 (\$1,130) a year, plus annual proportionate expenses of €6,000 (\$6,573)

**Contact:** Renaud Goalabré, Patrice Besse, 011-33-1-42-84-80-85, [patrice-besse.co.uk](mailto:patrice-besse.co.uk)